

FOR LEASE

Barrie Office Space
121 Wellington St. W

MEDICAL & PROFESSIONAL CENTRE

**New Broker
Incentive!**

**New Tenant
Incentive!**

Professional Office Suites

Various Configurations From **381SF** to **4,647SF**

- Utilities Included
- Ample Parking
- High Traffic Count
- Excellent Finishes
- Well Known Local Address
- Well Maintained Property
- Newly Renovated Common Space and Entrance

Rent's Starting at...

\$12.00/sq.ft. NET

T. & O. \$13.00/sf

\$5,000 Yorkdale Mall Gift Card, any 5 Year deal (expired March 31, 2018)

6 Months of Net Free rent, any 5 Year lease deal (expired March 31, 2018)

Tenant allowance or build to suit will be considered. Contact Listing agent to discuss Bonus Commission being offered.

Marc Pumple
Broker of Record
Direct: 647-955-9531
Toll Free: 1-866-955 9531
marc.pumple@pandpproperties.com



P & P Properties Inc., Brokerage

Managed by:



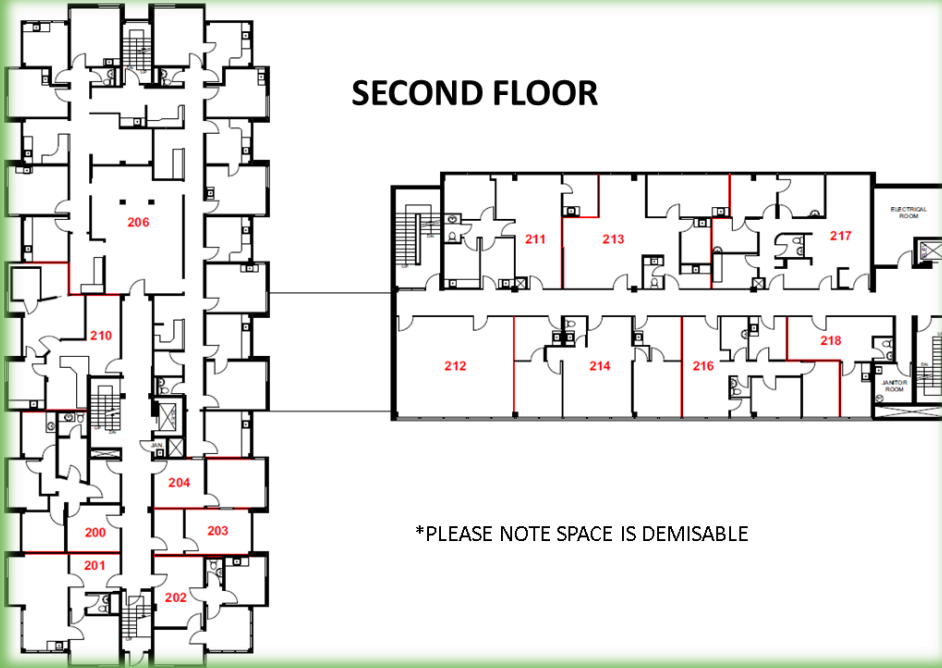
COMMERCIAL PROPERTIES

The information contained herein was obtained from sources deemed reliable and is believed to be true; it has not been verified and as such the accuracy, correctness, and completeness cannot be warranted or guaranteed, nor form part of any future contract.

FOR LEASE

Barrie Office Space 121 Wellington St. W

SECOND FLOOR



*PLEASE NOTE SPACE IS DEMISABLE

SUITE #	SIZE (SF)	ASKING NET LEASE RATE (PSF)
200	767	\$12.00
201	647	\$12.00
206E	1,086	\$12.00
212	707	\$12.00
218	381	\$12.00
211, 213, 217	3,097	\$12.00

THIRD FLOOR



*PLEASE NOTE SPACE IS DEMISABLE

SUITE #	SIZE (SF)	ASKING NET LEASE RATE (PSF)
302	1,114	\$12.00
303, 304, 305	4,647	\$12.00
307	944	\$12.00
311	2,212	\$12.00